

Work process - Fir trees



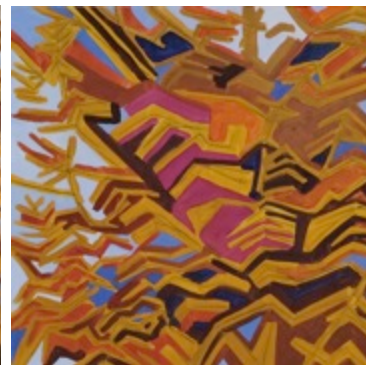
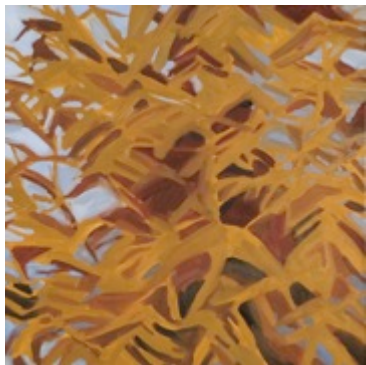
From my bedroom window I see our neighbours' fir tree.

The repetitive forms of the branches and their overlapping forms caught my interest.

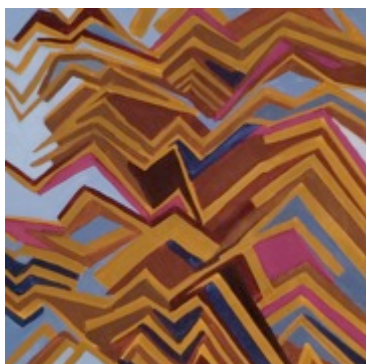


It is only when you start painting the branches of a fir tree that you realise how geometrical the forms are.

In order to dissociate these geometrical forms from the tree, I change the colours to blue and yellow.



Then I go further and integrated some colours, such as pink and orange, which one hardly associates with a fir tree.

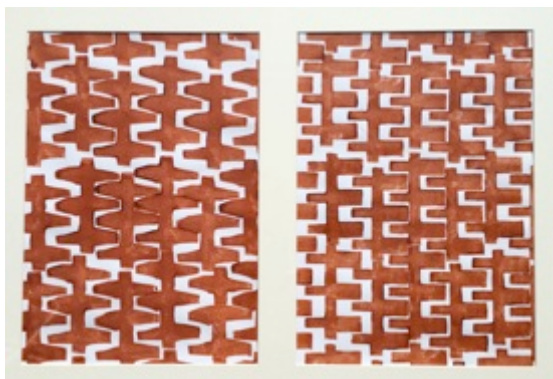


And in a next step I reduce the forms even more and concentrate on the repetition of a very simple form.



Parallel to the painted works I started a purely abstract series of works named „incastri“.

Simple forms fit into one another. Sometimes quite regularly, and then in contrast, in disorder – more freely.



Like all the „incastri“ pictures the same shapes are printed time and time again.

The central theme of this work is how these forms fit into one another and interact together.